

User Manual

User Manual of RFID TAMPER TAG for G2IL+

● Method one

Step 1: Open the software and connect the BU01 reader, display the connected status



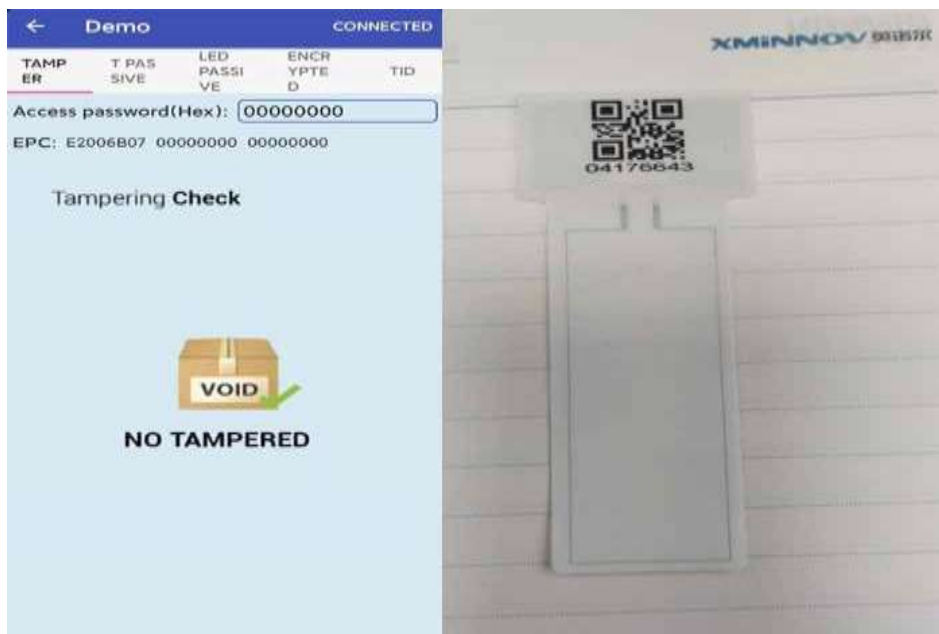
Step 2: Click on demo mode



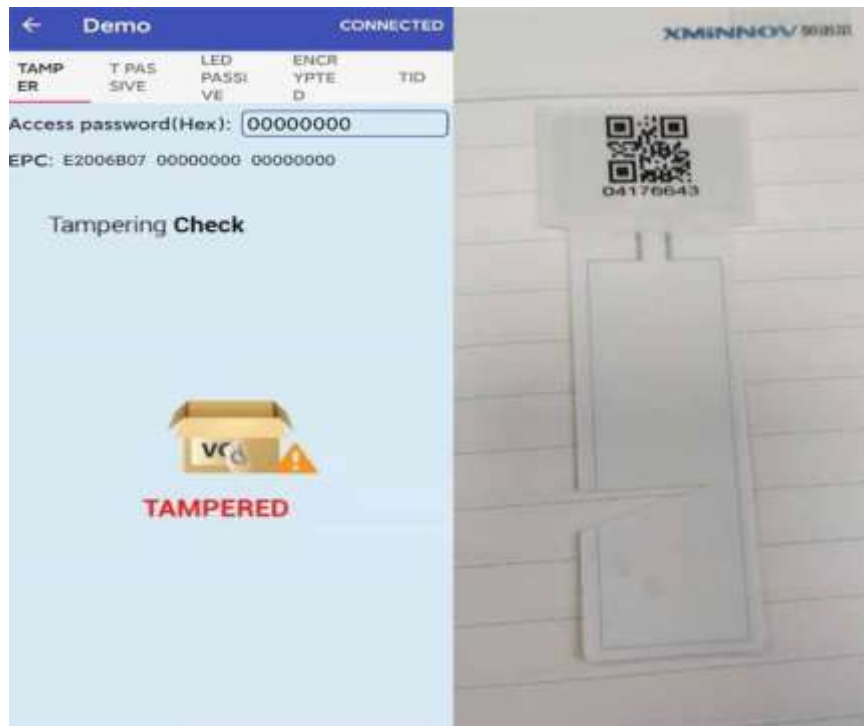
Step 3 : Select the TAMPER mode and click the scan tag area below to get tampered or no tampered from each tag.



NO TAMPERED basing on the data “8040/C040/4040” as below



TAMPERED basing on the data of “0040” as below



● Method Two

Step 1: Open the software and connect the BU01 reader, display the connected status

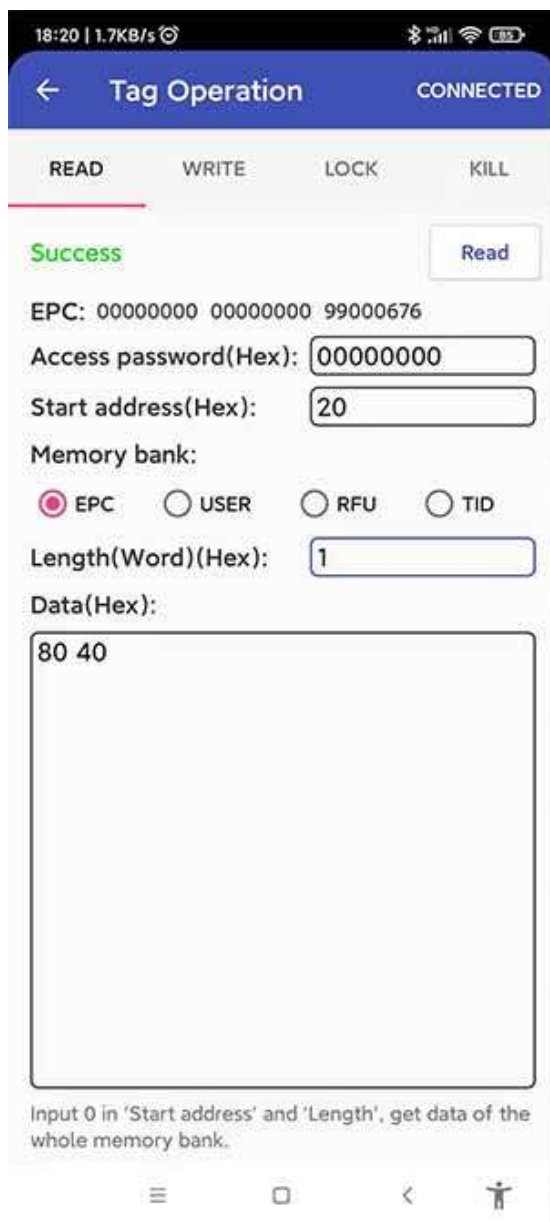


Step 2: Click start to start the inventory and select the specified label.

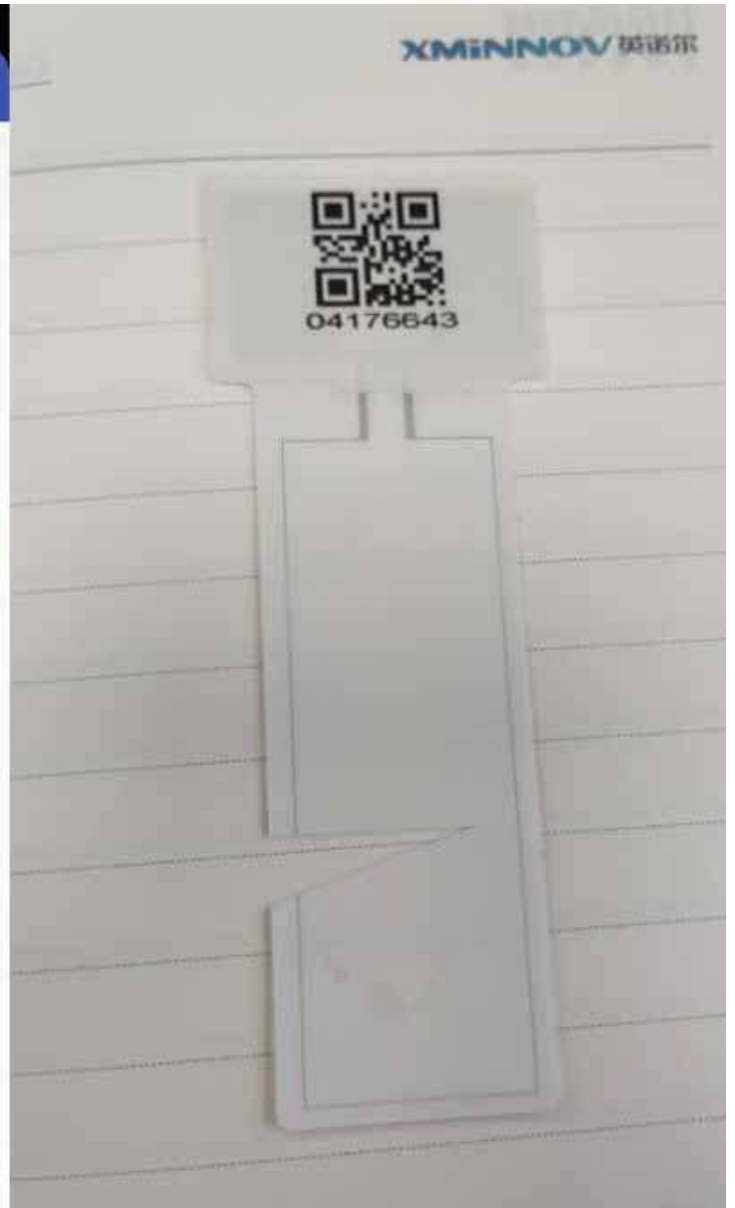
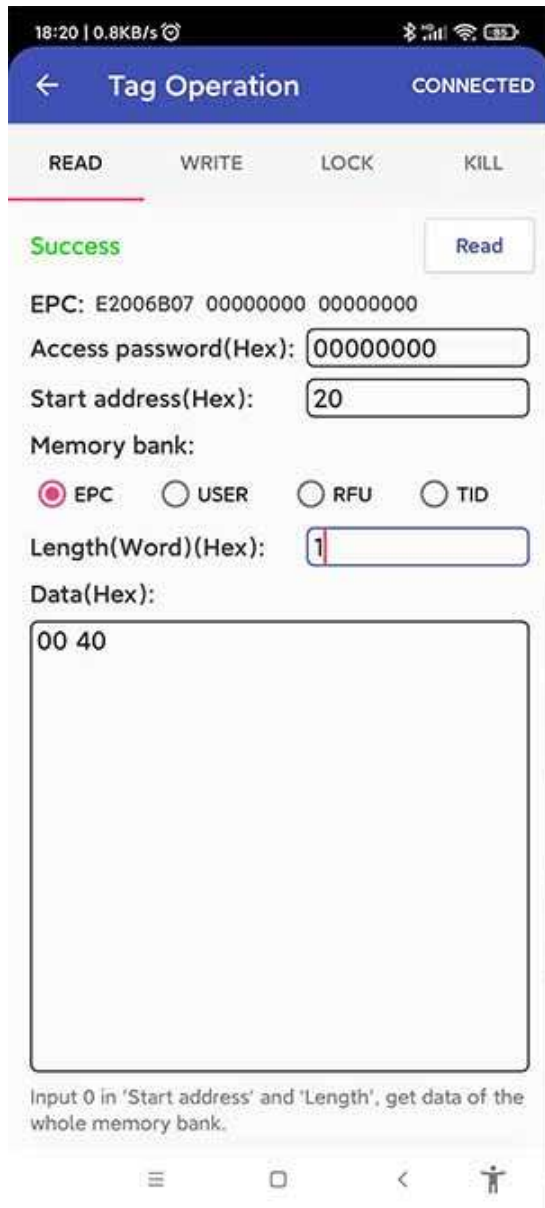


Step 3: Click on EPC and set Start address to 0x20 and Length to 1,
Content of “0040” means the detection loop is broken,
Content of “8040/C040/4040” means the detection loop is closed

NO TAMPERED as following



TAMPERED as following



NOTICE: Due to variant reading distance, the different RF field strength will cause tamper result changed between “0040” 、 “8040”、“C040” and “4040”, suggest to double check and keep reading range as far as possible, such as 100cm+.