

User Manual

How To Use Patented Anti-Tamper Windshield Tag

Section 1: Purpose

In order to use our patented special anti-tamper RFID tag correctly & properly. We here make an instruction for the operators whom was going to tear off RFID tag from the reel tape and stick tags onto windshield/front Screen.

NOTE: Windshield tag was recommended only for in car use, sticking inside of car or vehicles at front windscreens or back windscreens.

Section 2: Tear off or knife cut each tags from reel tape



Section 3: Clean windscreen with napkin by hand and for sure less moisture on windscreens, also make sure the sticking area has no metallic overlays, otherwise

cut off an space from metallic film for tag sticking which the cutting size must be little bit bigger than the tag size itself, for example 86*54mm, 120*25mm.



Keep as less moisture as possible with napkin by your hand

Section 4: Take one of the tag from liner correctly & properly, don't destroy tag function



Don't take off liner from these 4 Edge corners directly



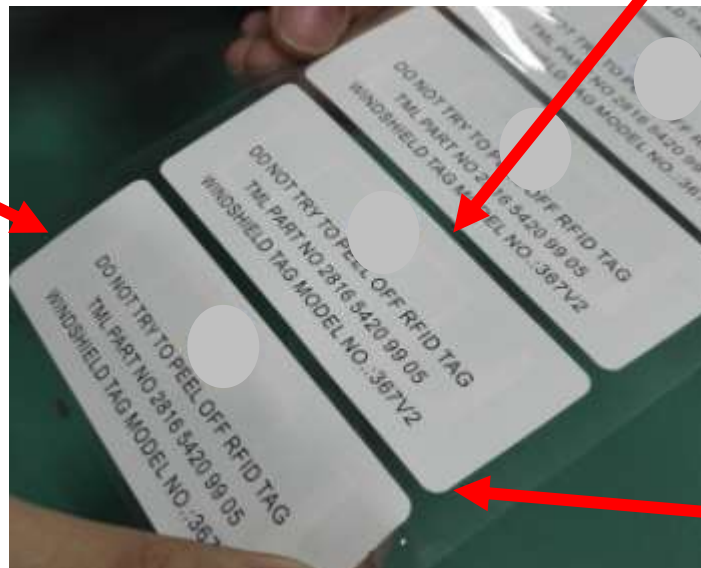


Separate linear from label

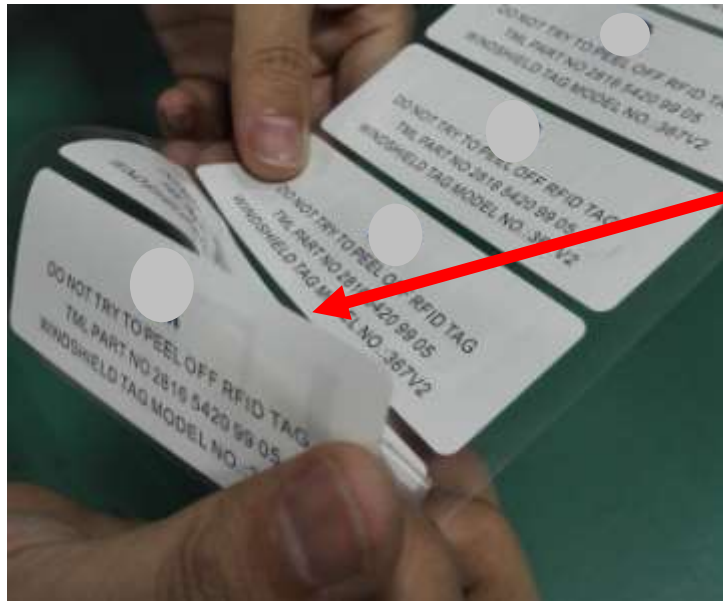
Turn back the tag then tear off the liner (Paper Liner or transparent PET Liner)

Right position to start tearing operation from this side and slowly tapping off

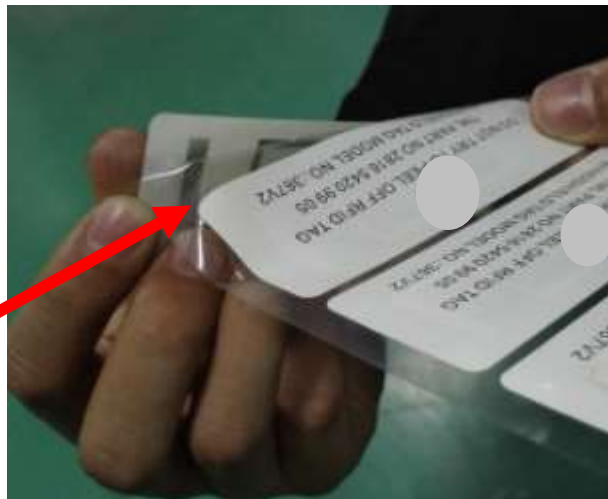
Wrong position to start tearing operation from any corner of the tag



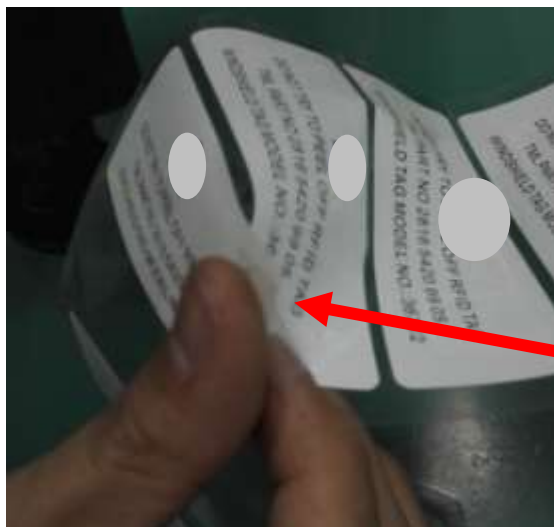
Wrong position to start tearing operation from any corner of the tag



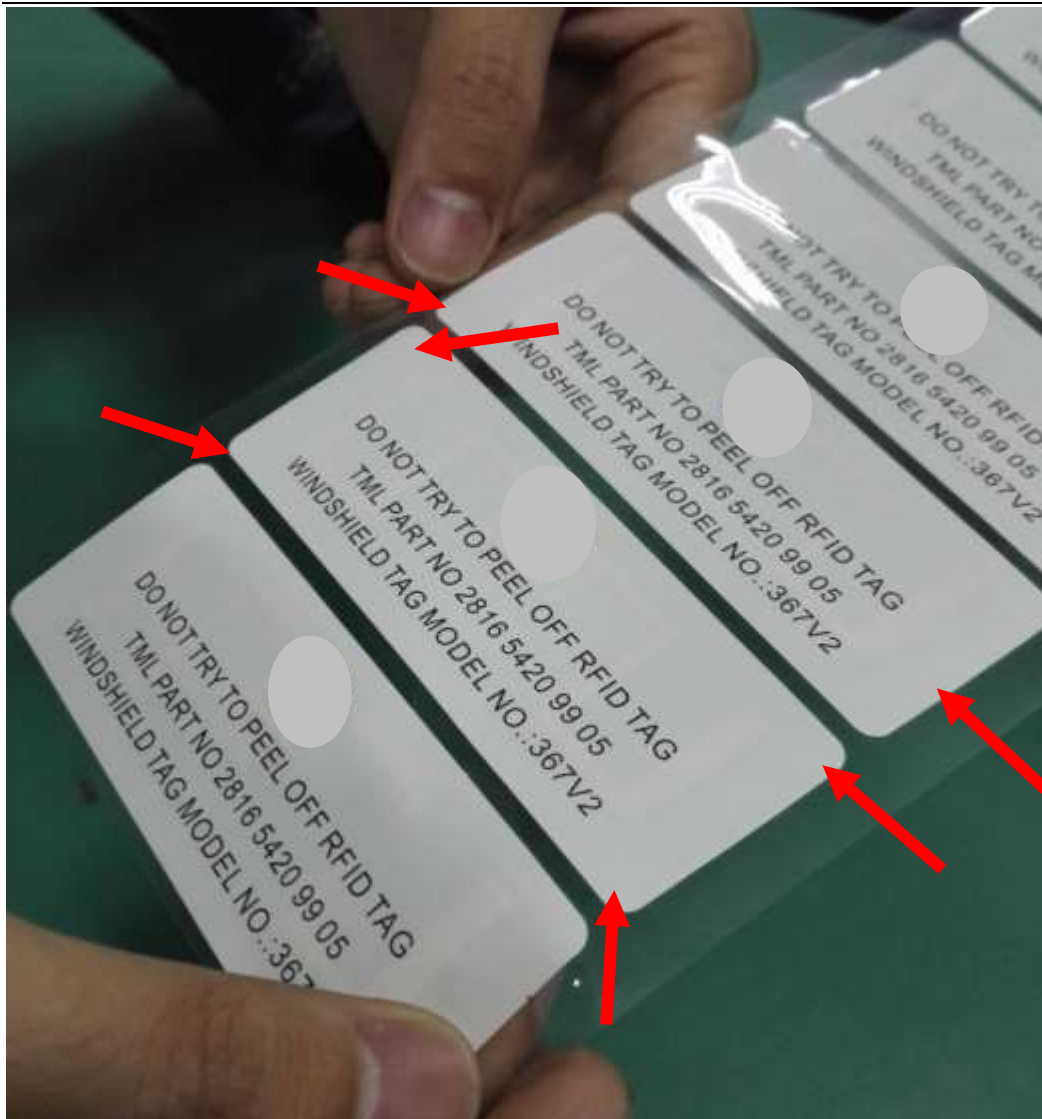
Slowly tap off the liner



Slowly peeling off each tag from liner



Tap to remove liner correctly



If the peeling has any problem, please try to tear from other position as mentioned on above pictures, keep no dangerous for each tag/labels as well as possible

NOTE:

- 1) Scrolling your finger to tap off label from liner, or tap off liner from label
- 2) The recommended operation is to tap each tag by hand from liner directl

Section 5: Paste one tag to the windshield



Sticking tag from left to right slowly & scrolling out air bubbles

Section 6: Make sure tag sticking properly and function is ok to close your operation, otherwise replacement is necessary.