

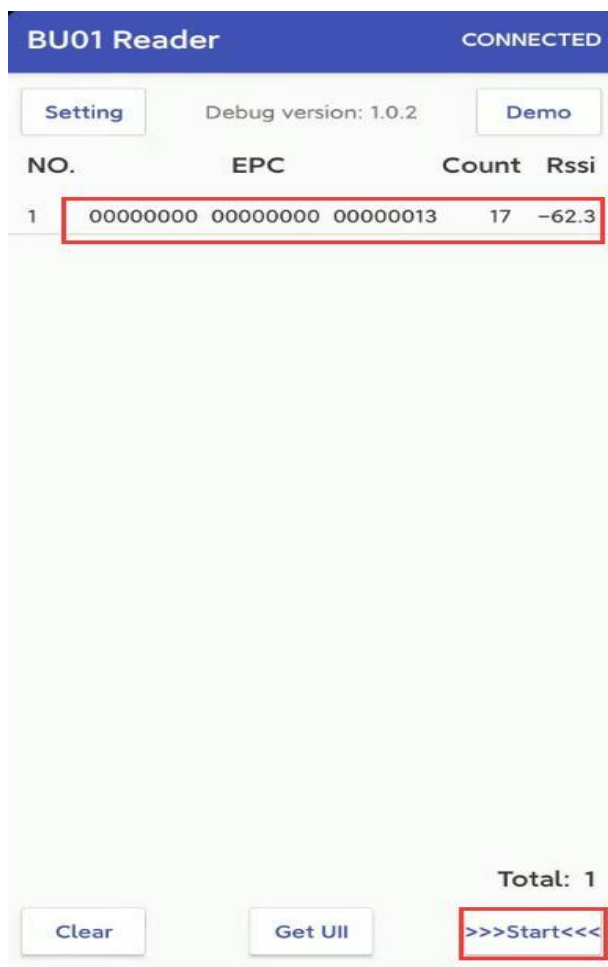
User Manual

How To Check RFID TAMPER Tag for CAB0/CAB1/VBL7

Step 1: Open the software and connect the BU01 reader, display the connected status



Step 2: Click start to start the inventory and select the specified label.

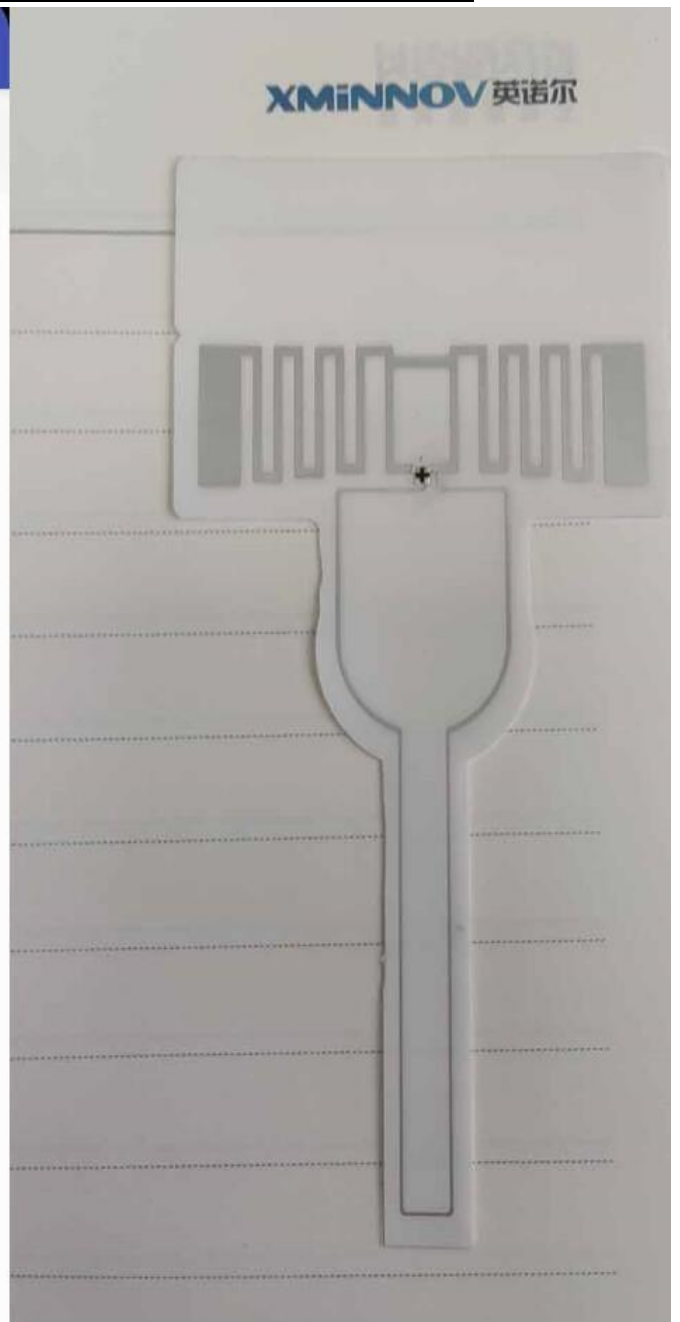
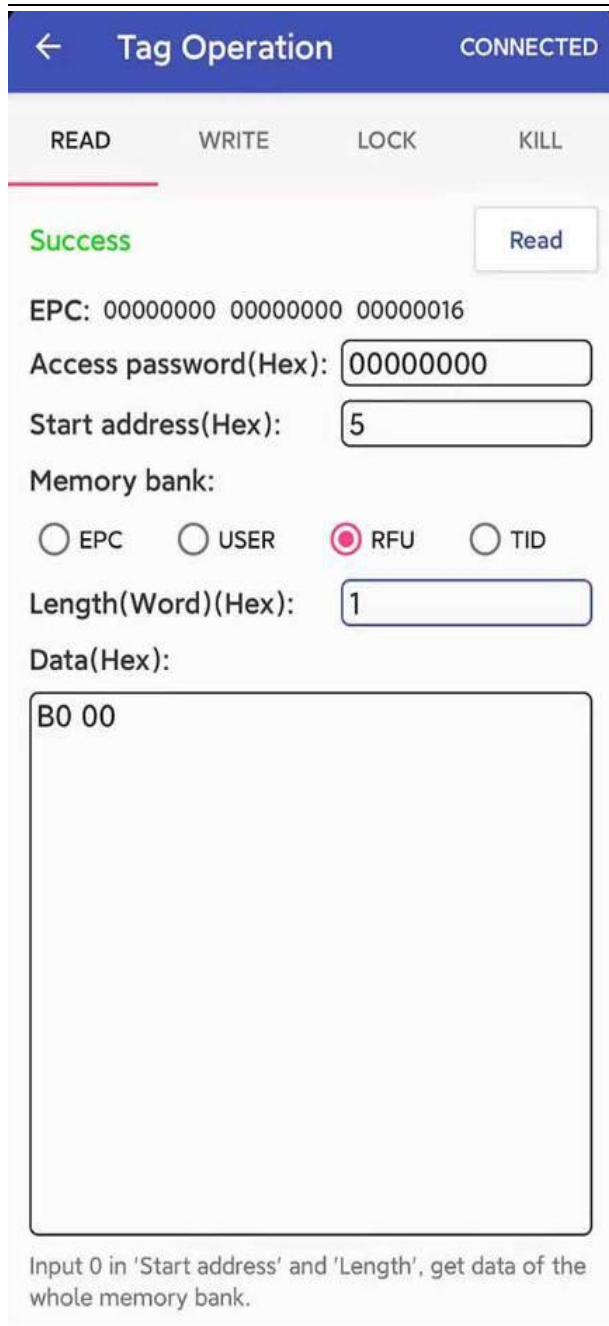


Step 3 : Click on RFU and set Start address to 0x05 and Length to 1

Content of “B0FF” means the detection loop was broken

Content of “B000” means the detection loop is closed.

- **NO TAMPERED**



With special app, the authentication result can be made as below

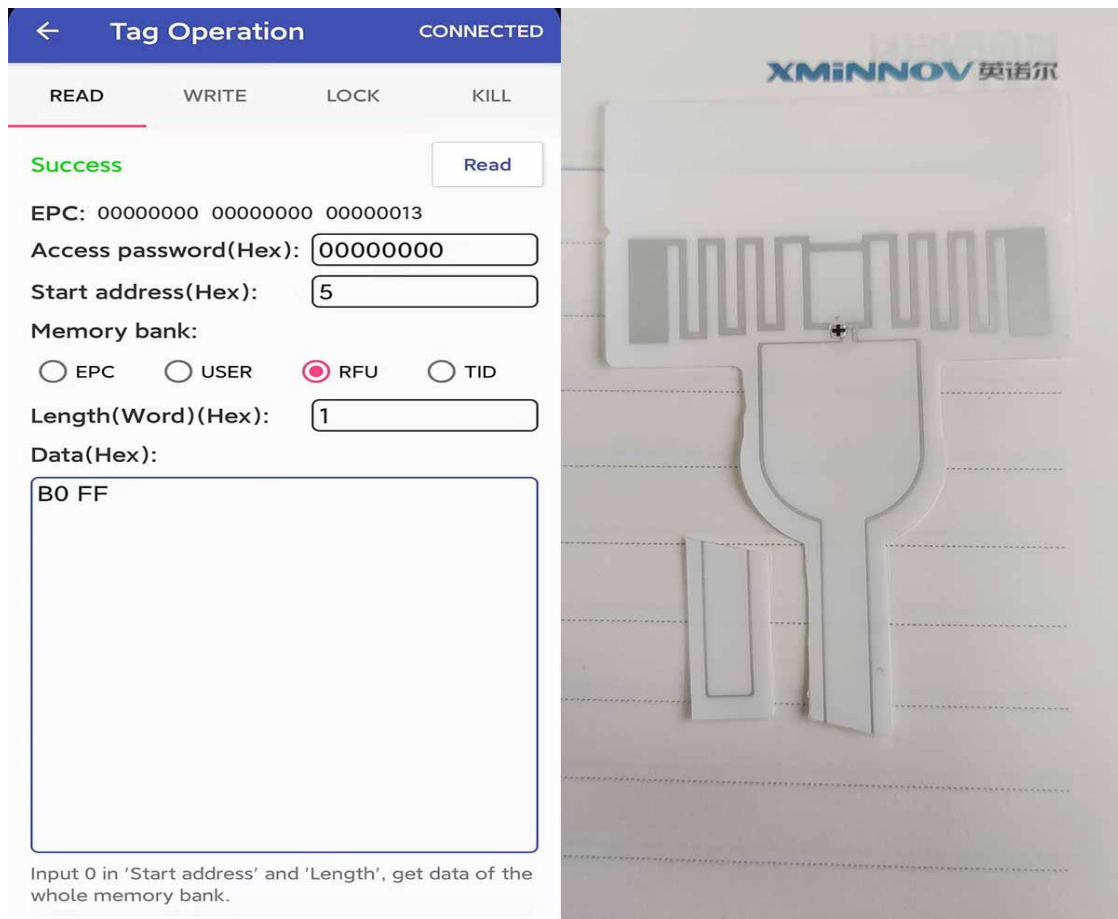


It's Real

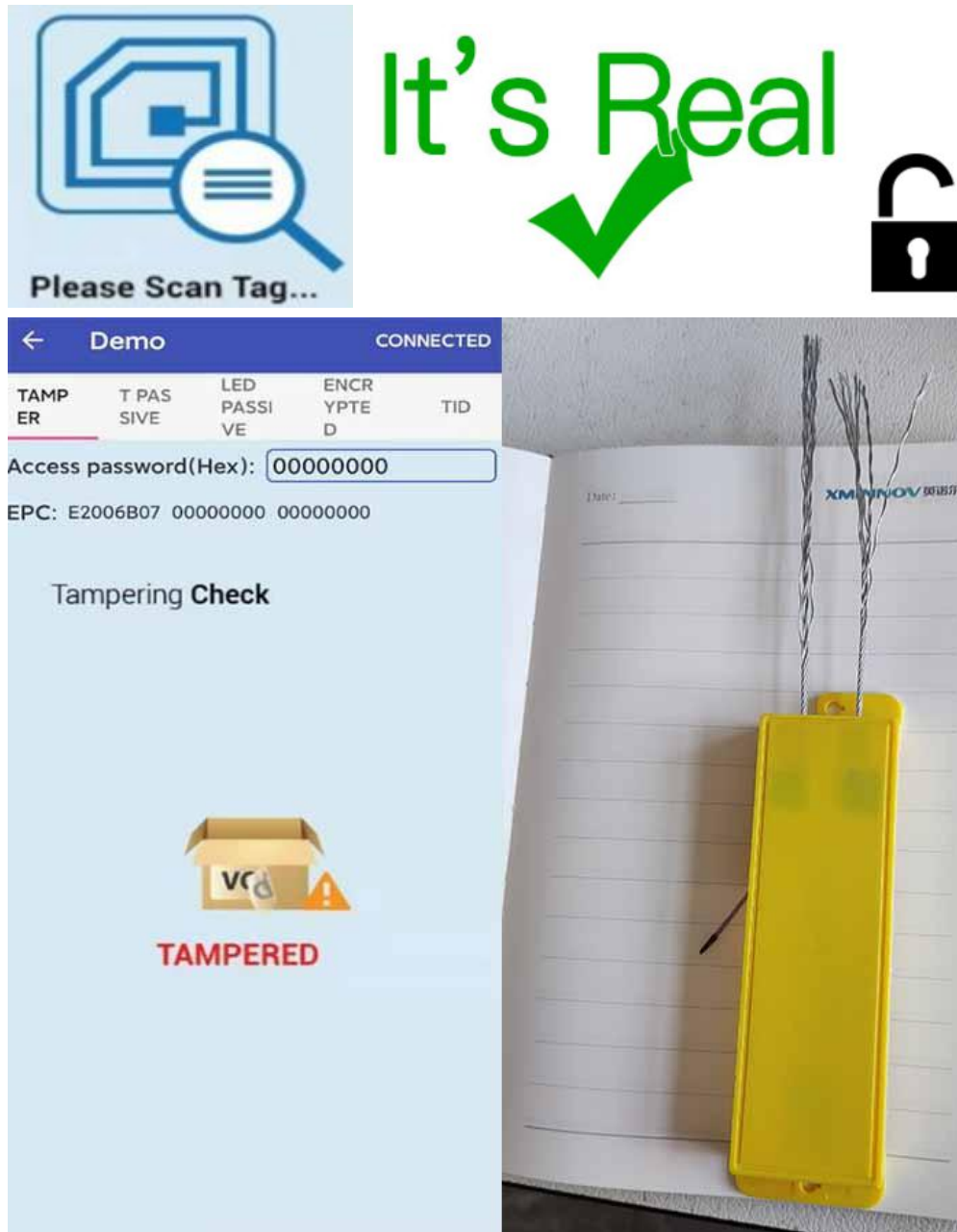




● **TAMPERED**



With special app, the authentication result can be made as below



NOTICE: Due to variant reading distance, the different RF field strength will cause tamper result of “B0FF” sometimes go to “B000”, suggest to double check and keep reading range as far as possible such as 10cm+.