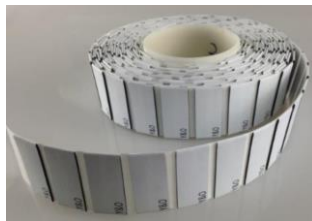


抗金属普通可打印超高频泡棉标签

Standard
标准

On Metal Use General Printable UHF Foam Tag



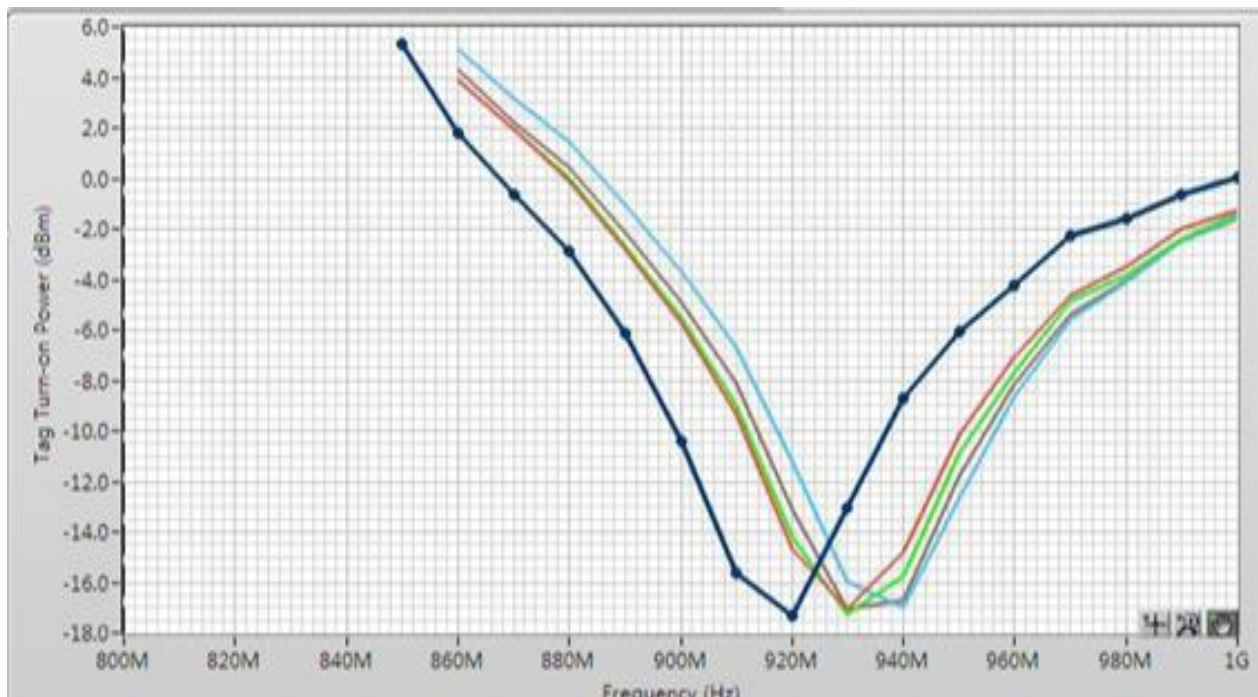
基本参数/Basic Parameters

尺寸/Size (L/OD x W/ID x H)	72*32*2mm(ID & OD圆形内外径/ID & OD means inner & outer diameter of round tag)
面材封装/FaceStock or Housing	可打印白色PET/Printable White PET
安装方法/Installation	胶粘/Adhesive
天线工艺/Antenna Type	铝天线/Aluminum Antenna
技术/Technology	泡棉叠层/Foam Style
离型纸/Backing Liner	白色格拉辛离型纸/White Glassine Paper Liner
特征/Characters	普通(General)/抗金属(On Metal Use)

产品特性/Product Feature

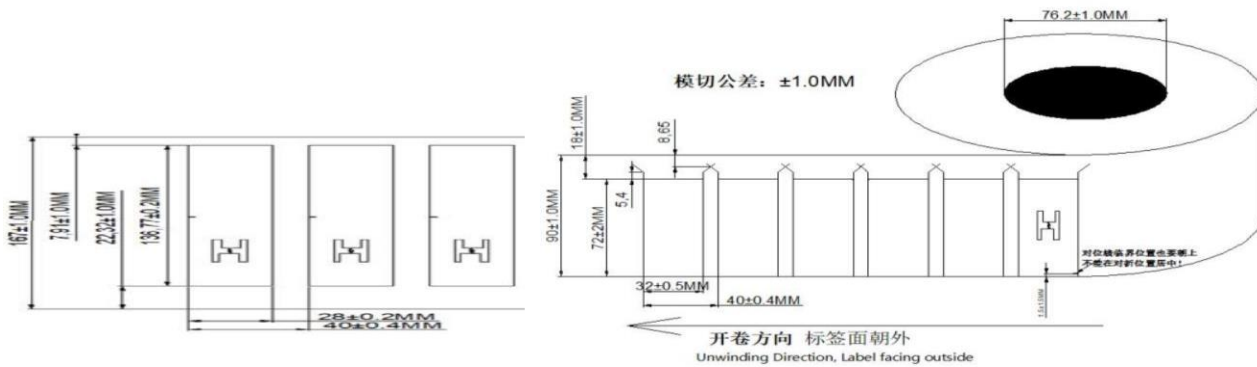
芯片/Chip Model	R6-P
协议/Protocol	ISO18000-6C GEN2
频率范围/Operating Frequency	902-928Mhz
内存/Memory	TID/UID 96bit+ EPC/Block 96/128bit+ User 64/32bit+ Reserve 32bit access/32bit kill
读距/Reading Range	500cm (depends on reader)
应介质/Applicable Surface	金属(On metal)
个性化选项/Option	定制彩色印刷条码文本或个性化编码Custom color printing(Embossing or laser-engraving) with barcode or text & personalization encoding

附加说明/Additional



供货方式/Delivery & Supply Format

卷料供货每卷数量1000-3000片(特殊要求见附加说明) Supply in roll with 1000-3000PCS/Roll(Check Additional Note for your specific needs)



应用场景/Application

抗金属可打印标签主要是为金属制品的标识及管理资产管理而设计的, 可推荐应用在制造业中的物流管理, 集装箱、货架、设备、仪器、医疗器械、固定资产等管理, 如燃气瓶、不锈钢水壶、金属盒、自动化零部件、工具等不规则形状表面, 包括弧形, 圆形, 方形。用于物品防盗管理和溯源监管 On metal printable tag was designed for identification of metallic housing assets products especially in the field of manufacturers, mainly used for logistics management, container, goods shelf, equipment, instrument, medical device, fixed-asset management, such as gas cylinder, steel boiler, metal box, automatic components, industry spare parts, with irregular and uneven surface, new moon shape, roundness, square. Recommended for security anti-thief control and traceability supervision management



环境参数/Environmental Parameter

数据保存/Data EEPROM Retention	10years
静电保护/ESD Limited Voltage	2KV
工作温度/Operating Temperature	-35 $^{\circ}\text{C}$ - 85 $^{\circ}\text{C}$
储存温度/Storage Temperature	0 $^{\circ}\text{C}$ - 25 $^{\circ}\text{C}$
操作湿度/Relative Humidity	10%-95%(Variant Performance)

兼容打印机/Compatible Printers

佐藤/SATO	CL4NX
斑马/Zebra	ZT411RFID
博思得/POSTEK	TX Series
东芝/TOSHIBA	SX-4T SX-5T

NOTE:The specification is subject to change without prior notice

批准 Approved By: 张琼勇
日期 Date: 2020/08/21

制作审核 Prepared & Checked By: 林鸿伟
日期 Date: 2021/01/07