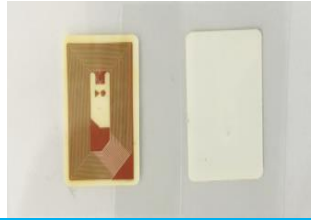


防伪可打印高频标签

Standard
标准

Tamper Proof Printable HF NFC Tag



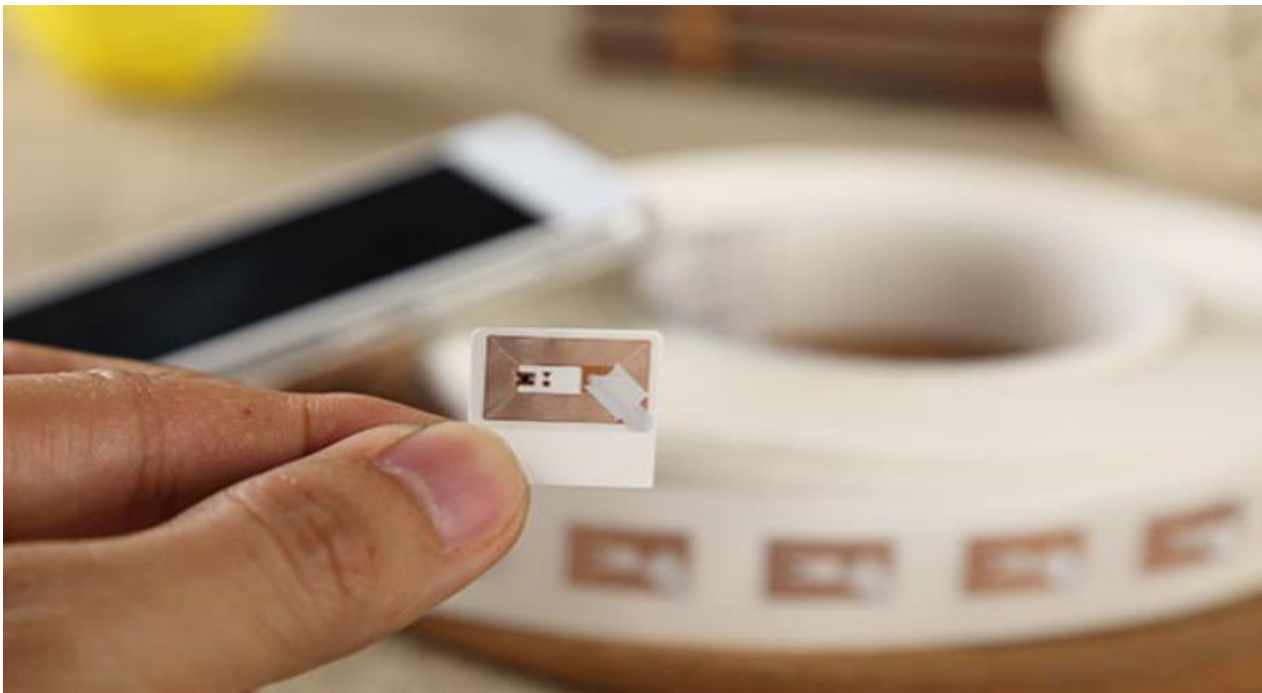
基本参数/Basic Parameters

尺寸/Size (L/OD x W/ID x H)	20*13*0.1mm(ID & OD圆形内外径/ID & OD means inner & outer diameter of round tag)
面材封装/FaceStock or Housing	可打印易碎纸/Printable Brittle Paper
安装方法/Installation	胶粘/Adhesive
天线工艺/Antenna Type	铜天线/Copper Antenna
技术/Technology	平面微带/Microstrip Flat Style
离型纸/Backing Liner	单面离型透明PET/Single Silicon & Transparent PET Liner
特征/Characters	防伪(Tamper Proof)

产品特性/Product Feature

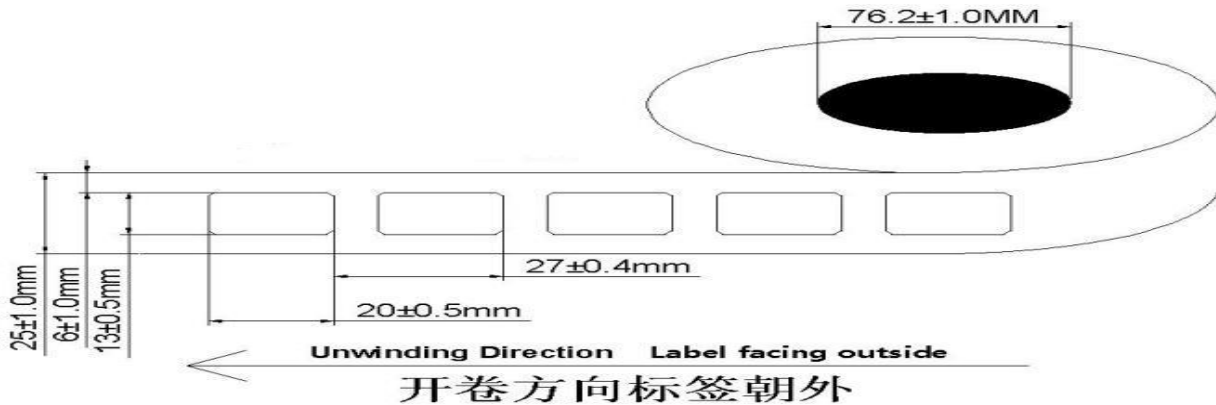
芯片/Chip Model	ICODE SLIX
协议/Protocol	ISO15693
频率范围/Operating Frequency	13.0-14.5Mhz
内存/Memory	TID/UID 7bytes+ EPC/Block 1024bit(32blocks x 4bytes)+ User + Reserve
读距/Reading Range	2.0cm (depends on reader)
应介质/Applicable Surface	空气(Air-free)
个性化选项/Option	定制彩色印刷条码文本或个性化编码Custom color printing(Embossing or laser-engraving) with barcode or text & personalization encoding

附加说明/Additional



供货方式/Delivery & Supply Format

卷料供货每卷1000-3000片 Supply in roll with 1000-3000PCS/Roll



应用场景/Application

防伪标签主要是用在香烟、酒品（如红酒、啤酒、白酒等）、化妆品、药品、农药、农副产品、食品、动物溯源、零配件领域，以实现产品的标识、跟踪、及溯源查询或监管，包括物流供应链、数字化仓储、溯源监管，以及相关涉密文件档案、信件、支票发票、证件、考试试卷案宗，如学生证、监狱犯人档案、银行汇票、文件袋封签、箱封、产品QC/保修封条等等。Anti-counterfeiting tag mainly used for Tobacco/Cigarette, Liquors(white wine/black wine/beer/whisky), cosmetic, medicine, drug/medicine, Farm chemical like pesticide, food, animal traceability, spare part anti-fake tracking as a product identification for item/goods tracking, monitoring and supervision management. Including logistics supply chain, digital warehousing, source traceability, even more related security document and confidential files, letters, ticket, bank proof, certification, exam paper, special document seal like the prisoner's profile and so on document management, box seal, product QC sticker/warranty seal and so on.



环境参数/Environmental Parameter

数据保存/Data EEPROM Retention	10years
静电保护/ESD Limited Voltage	2KV
工作温度/Operating Temperature	-35℃ - 85℃
储存温度/Storage Temperature	0℃ - 25℃
操作湿度/Relative Humidity	10%-95%(Variant Performance)

兼容打印机/Compatible Printers

佐藤/SATO	CL4NX
斑马/Zebra	ZT411RFID
博思得/POSTEK	TX Series
东芝/TOSHIBA	SX-4T SX-5T

NOTE:The specification is subject to change without prior notice

批准 Approved By: 张琼勇
日期 Date: 2020/08/21

制作审核 Prepared & Checked By: 林鸿伟
日期 Date: 2020/11/06